

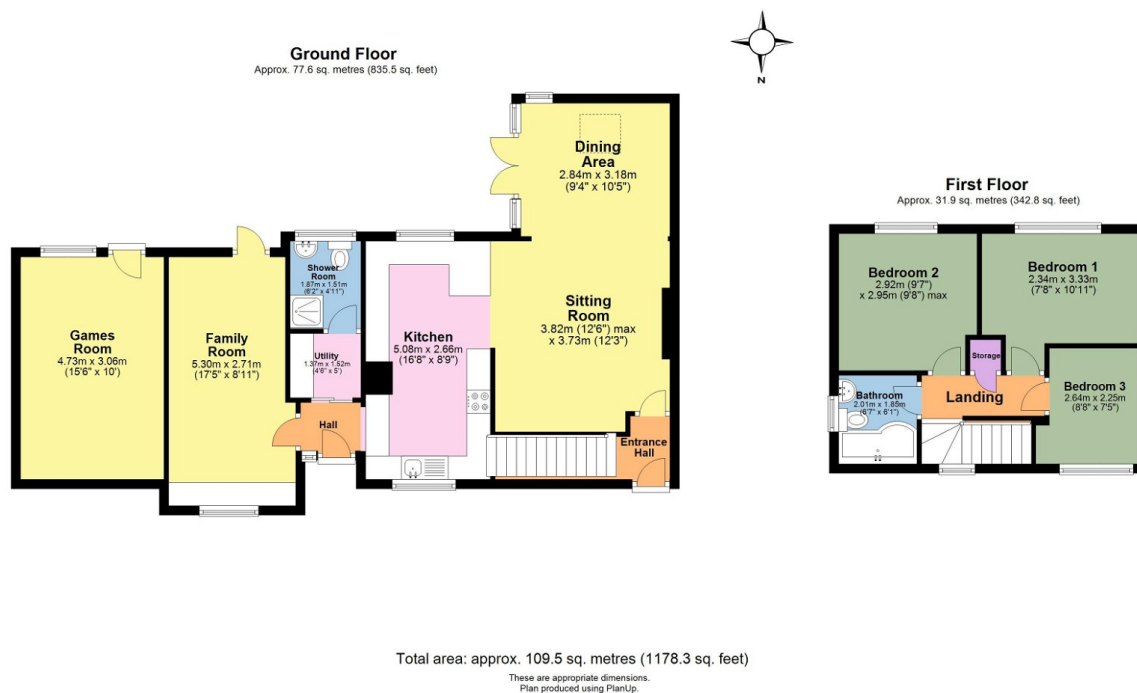
Woodend Road, Woolwell, Plymouth, PL6 7RQ

Guide Price £349,000

3 2 4



- 3 bed semi-detached
- Popular location
- Additional ground floor living space
- Modern hi-gloss kitchen
- Conservatory
- Two bathrooms
- Utility Room
- Parking for 2 + cars
- Rear Garden
- Solar Panels



Located in Woolwell, close to a range of amenities and local schools, is this 3-bedroom family home offering additional ground floor living accommodation. The property boast a modern kitchen and open plan living space that extends into the Conservatory. The driveway provides ample parking for 2/3 cars and there is both a front and rear garden.